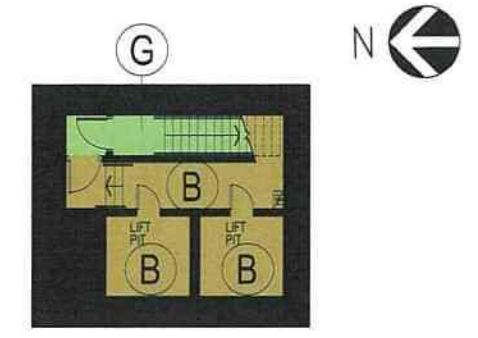


LEGEND :

- G GREEN - CARPARK COMMON AREAS AND FACILITIES
- B BROWN - RESIDENTIAL COMMON AREAS AND FACILITIES
- Y YELLOW - DEVELOPMENT COMMON AREAS AND FACILITIES
- V VIOLET - COMMERCIAL ACCOMMODATION
- P PINK - COMMERCIAL COMMON AREAS AND FACILITIES
- BL BOUNDARY LINE



PART PLAN AT LEVEL -7.025



ABBREVIATION

EAD	EXHAUST AIR DUCT
ELV RM.	EXTRA LOW VOLTAGE ROOM
ER	ELECTRIC ROOM
EV	ELECTRIC VEHICLE CHARGER
FLL	FIREMAN'S LIFT LOBBY
FS	FIRE SERVICES
ØHL	AT HIGH LEVEL
HR	HOSE REEL
LL	LIFT LOBBY
SPR	SPRINKLER
S.V.	SMOKE VENT
TBE	TELECOMMUNICATION AND BROADCASTING EQUIPMENT ROOM
TRS	TEMPORARY REFUGE SPACE
WMC	WATER METER CABINET

BASEMENT 2 PLAN



URA DEVELOPMENT PROJECT KC-008(A) AT THE REMAINING PORTION OF KOWLOON INLAND LOT NO.11278

PLAN NO. DMC-001
1:200 A3

DMC PLAN
FOR IDENTIFICATION PURPOSE ONLY

DATE : 13.06.2023

I HEREBY CERTIFY THE ACCURACY OF THIS PLAN

Chan Wan Ming
CHAN WAN MING
Authorized Person (Architect)

LEGEND :

- G GREEN - CARPARK COMMON AREAS AND FACILITIES
- B BROWN - RESIDENTIAL COMMON AREAS AND FACILITIES
- Y YELLOW - DEVELOPMENT COMMON AREAS AND FACILITIES
- V VIOLET - COMMERCIAL ACCOMMODATION
- P PINK - COMMERCIAL COMMON AREAS AND FACILITIES
- BL BOUNDARY LINE



ABBREVIATION

AMR	AUTOMATIC METER READING
EAD	EXHAUST AIR DUCT
ELV RM.	EXTRA LOW VOLTAGE ROOM
ER	ELECTRIC ROOM
EV	ELECTRIC VEHICLE CHARGER
FAD	FRESH AIR DUCT
FLL	FIREMAN'S LIFT LOBBY
⊙HL	AT HIGH LEVEL
HR	HOSE REEL
LL	LIFT LOBBY
PFWTPR	POTABLE AND FLUSHING WATER TANK AND PUMP ROOM
S.V.	SMOKE VENT
TBE	TELECOMMUNICATION AND BROADCASTING EQUIPMENT ROOM
TRS	TEMPORARY REFUGE SPACE
VD	VENTILATION DUCT
WMC	WATER METER CABINET

BASEMENT 1 PLAN



DATE : 08.08.2023

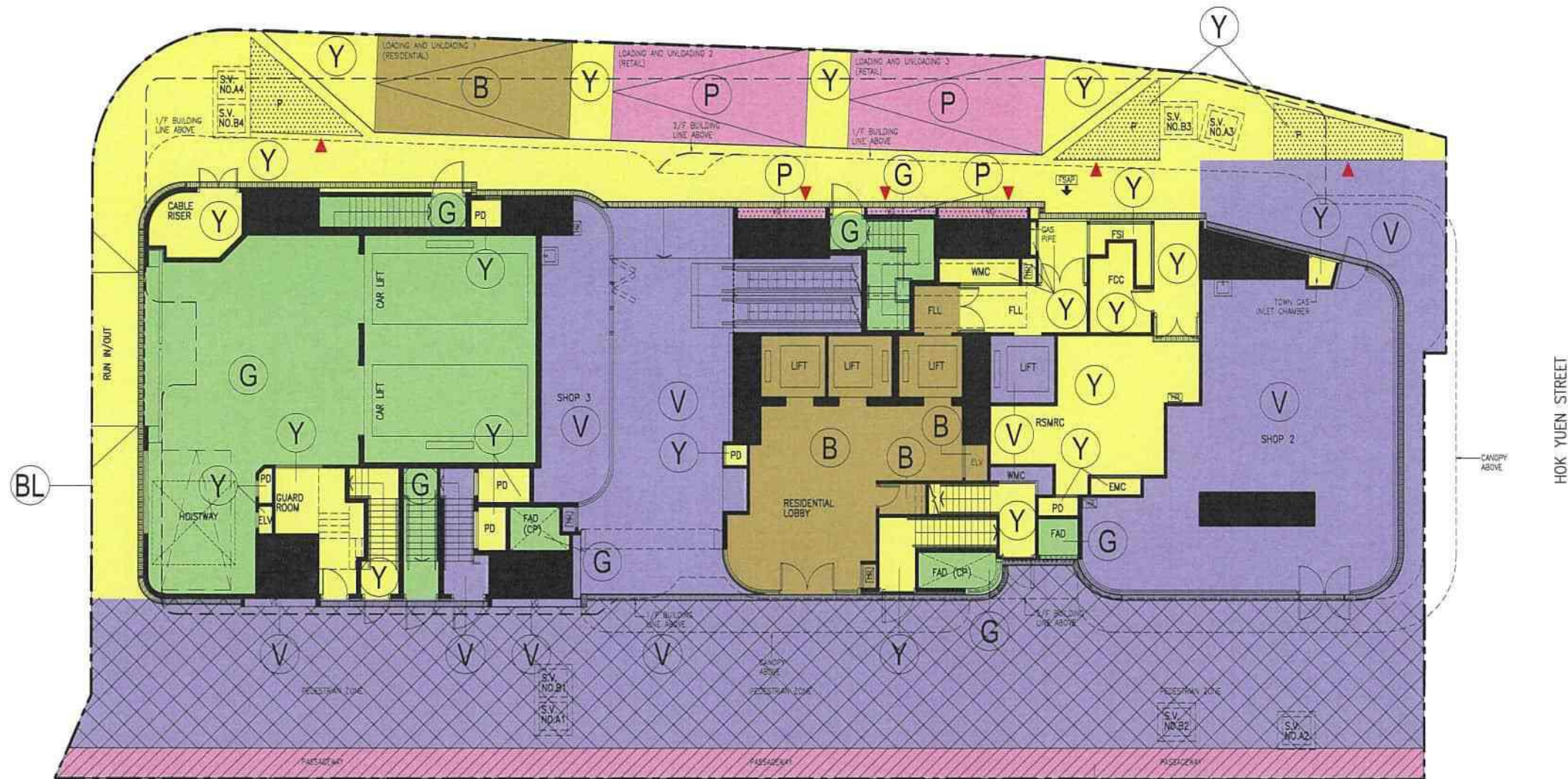
URA DEVELOPMENT PROJECT KC-008(A) AT THE REMAINING PORTION OF KOWLOON INLAND LOT NO.11278		I HEREBY CERTIFY THE ACCURACY OF THIS PLAN CHAN WAN MING Authorized Person (Architect)
PLAN NO. DMC-002 1:200 @ A3	DMC PLAN FOR IDENTIFICATION PURPOSE ONLY	



LEGEND :

- G GREEN – CARPARK COMMON AREAS AND FACILITIES
- B BROWN – RESIDENTIAL COMMON AREAS AND FACILITIES
- Y YELLOW – DEVELOPMENT COMMON AREAS AND FACILITIES
- Y YELLOW STIPPLED BLACK – DEVELOPMENT COMMON AREAS AND FACILITIES (GREENERY AREAS 19.426s.m.)
- V VIOLET – COMMERCIAL ACCOMMODATION
- V VIOLET CROSS-HATCHED BLACK – COMMERCIAL ACCOMMODATION (PEDESTRIAN ZONE)
- P PINK – COMMERCIAL COMMON AREAS AND FACILITIES
- P PINK STIPPLED BLACK – COMMERCIAL COMMON AREAS AND FACILITIES (GREENERY AREAS 26.490s.m.)
- P PINK HATCHED BLACK – COMMERCIAL COMMON AREAS AND FACILITIES (PASSAGEWAY)
- BL BOUNDARY LINE
- ▲ COMMON ACCESS TO THE GREENERY AREAS

SUNG CHI STREET



ABBREVIATION

CP	CARPARK
ELV	EXTRA LOW VOLTAGE DUCT
FAD	FRESH AIR DUCT
FCC	FIRE CONTROL CENTRE
FLL	FIREMAN'S LIFT LOBBY
FSAP	FIRE SERVICES ACCESS POINT
FSI	FIRE SERVICES INLET
HR	HOSE REEL
P	PLANTER
PD	PIPE DUCT
RSMRC	REFUSE STORAGE AND MATERIAL RECOVERY CHAMBER
S.V.	SMOKE VENT
VG	VERTICAL GREENING
WMC	WATER METER CABINET

GROUND FLOOR PLAN



URA DEVELOPMENT PROJECT KC-008(A) AT THE REMAINING PORTION OF KOWLOON INLAND LOT NO.11278

PLAN NO. DMC-003
1:200 @ A3

DMC PLAN
FOR IDENTIFICATION PURPOSE ONLY

DATE : 13.06.2023

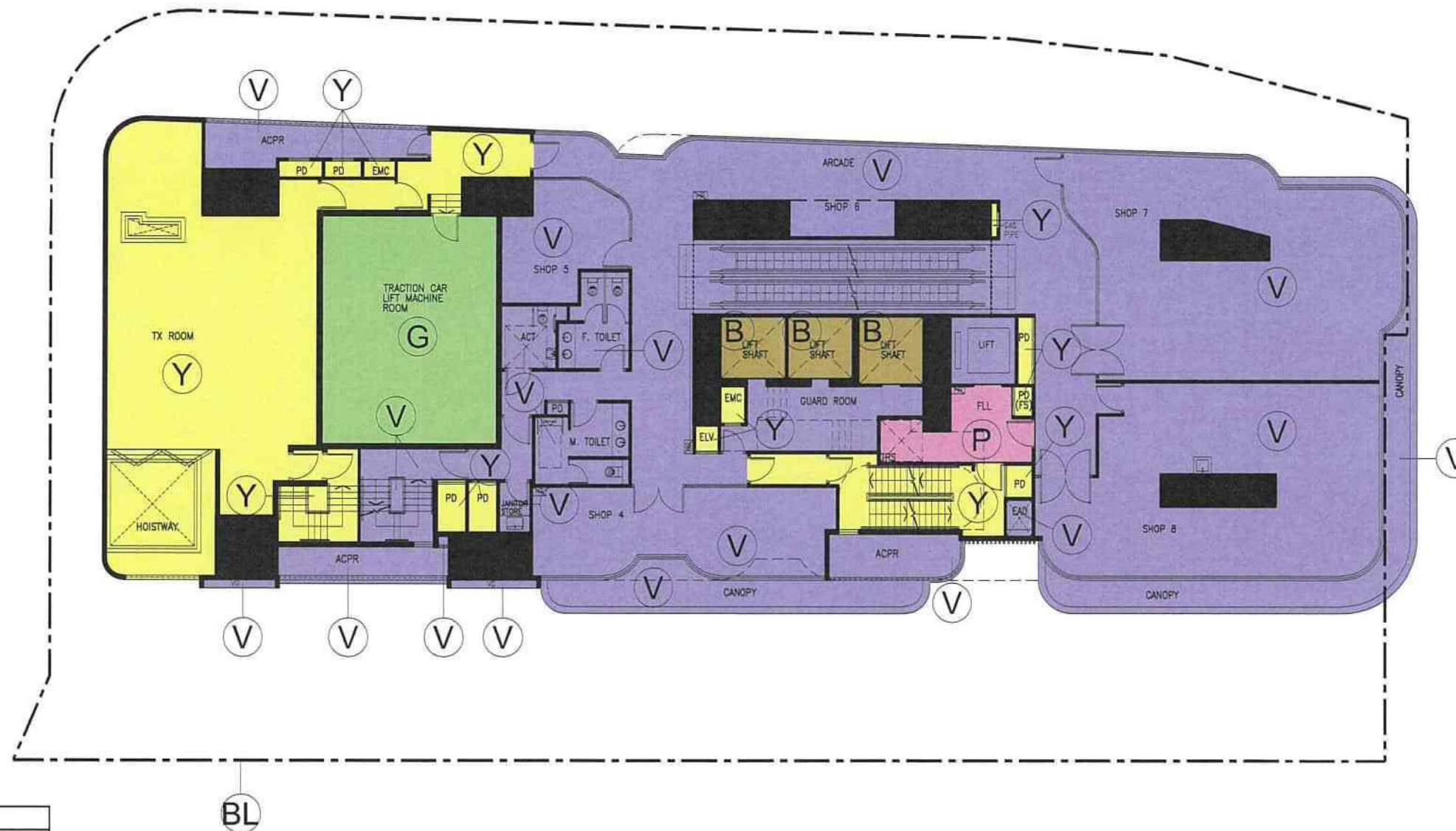
I HEREBY CERTIFY THE ACCURACY OF THIS PLAN

Chan Wan Ming
CHAN WAN MING
Authorized Person (Architect)



LEGEND :

- G GREEN - CARPARK COMMON AREAS AND FACILITIES
- B BROWN - RESIDENTIAL COMMON AREAS AND FACILITIES
- Y YELLOW - DEVELOPMENT COMMON AREAS AND FACILITIES
- V VIOLET - COMMERCIAL ACCOMMODATION
- P PINK - COMMERCIAL COMMON AREAS AND FACILITIES
- BL BOUNDARY LINE




ABBREVIATION

ACPR	AIR CONDITIONER PLANT ROOM
ACT	ACCESSIBLE UNISEX TOILET
EAD	EXHAUST AIR DUCT
ELV	EXTRA LOW VOLTAGE DUCT
EMC	ELECTRIC METER CABINET
F.	FEMALE
FAD	FRESH AIR DUCT
FLL	FIREMAN'S LIFT LOBBY
FS	FIRE SERVICES
HR	HOSE REEL
M.	MALE
PD	PIPE DUCT
TRS	TEMPORARY REFUGE SPACE
TX	TRANSFORMER
VG	VERTICAL GREENING

1/F PLAN

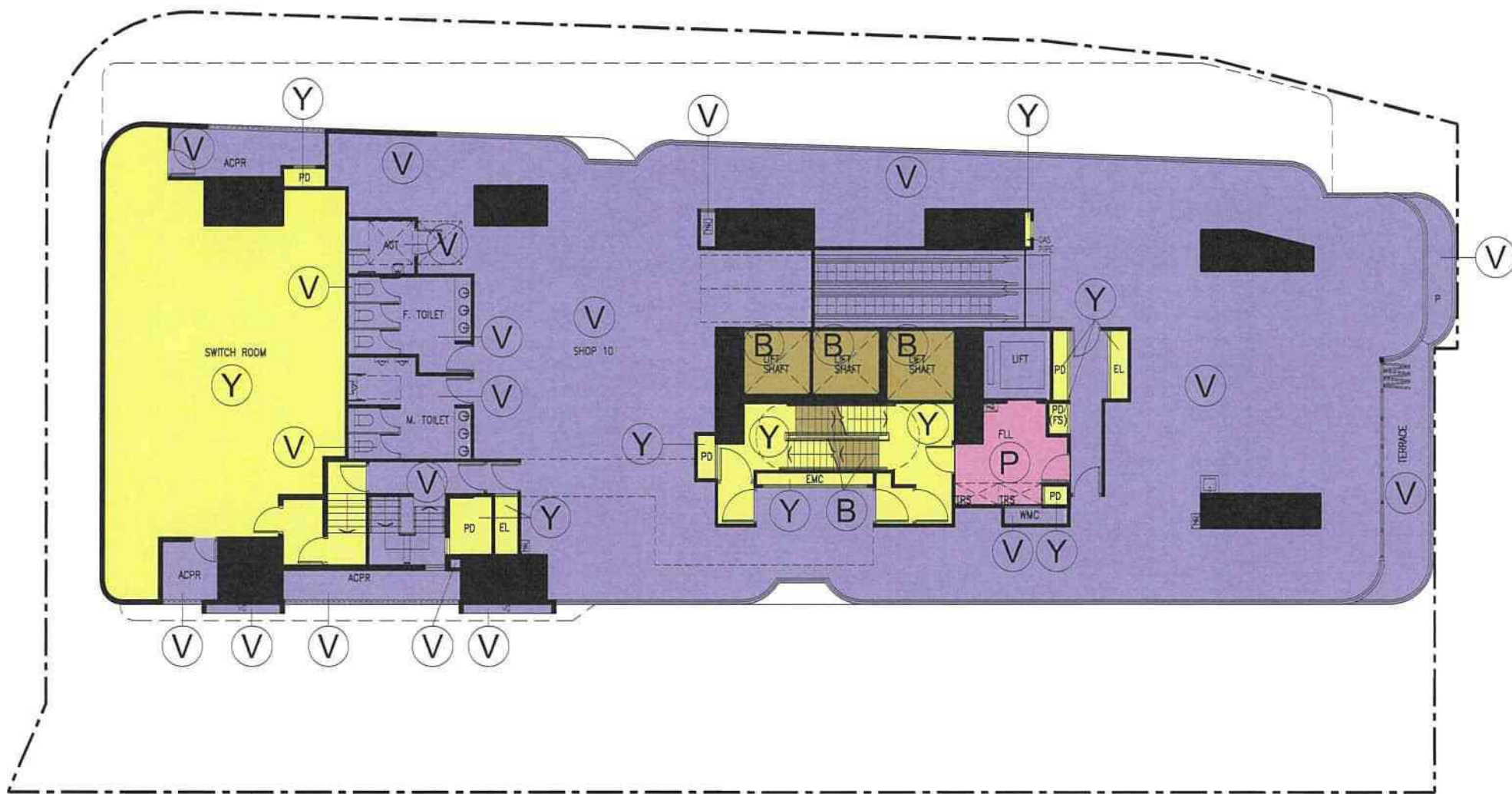


DATE : 13.06.2023

URA DEVELOPMENT PROJECT KC-008(A) AT THE REMAINING PORTION OF KOWLOON INLAND LOT NO.11278		I HEREBY CERTIFY THE ACCURACY OF THIS PLAN  CHAN WAN MING Authorized Person (Architect)
PLAN NO. DMC-004 1:200 @ A3	DMC PLAN FOR IDENTIFICATION PURPOSE ONLY	



- LEGEND :**
- B BROWN – RESIDENTIAL COMMON AREAS AND FACILITIES
 - Y YELLOW – DEVELOPMENT COMMON AREAS AND FACILITIES
 - V VIOLET – COMMERCIAL ACCOMMODATION
 - P PINK – COMMERCIAL COMMON AREAS AND FACILITIES
 - BL BOUNDARY LINE



ABBREVIATION

ACPR	AIR CONDITIONER PLANT ROOM
ACT	ACCESSIBLE UNISEX TOILET
EL	ELECTRICAL
EMC	ELECTRIC METER CABINET
F.	FEMALE
FLL	FIREMAN'S LIFT LOBBY
FS	FIRE SERVICES
HR	HOSE REEL
M.	MALE
P	PLANTER
PD	PIPE DUCT
TRS	TEMPORARY REFUGE SPACE
VG	VERTICAL GREENING
WVC	WATER METER CABINET








BL

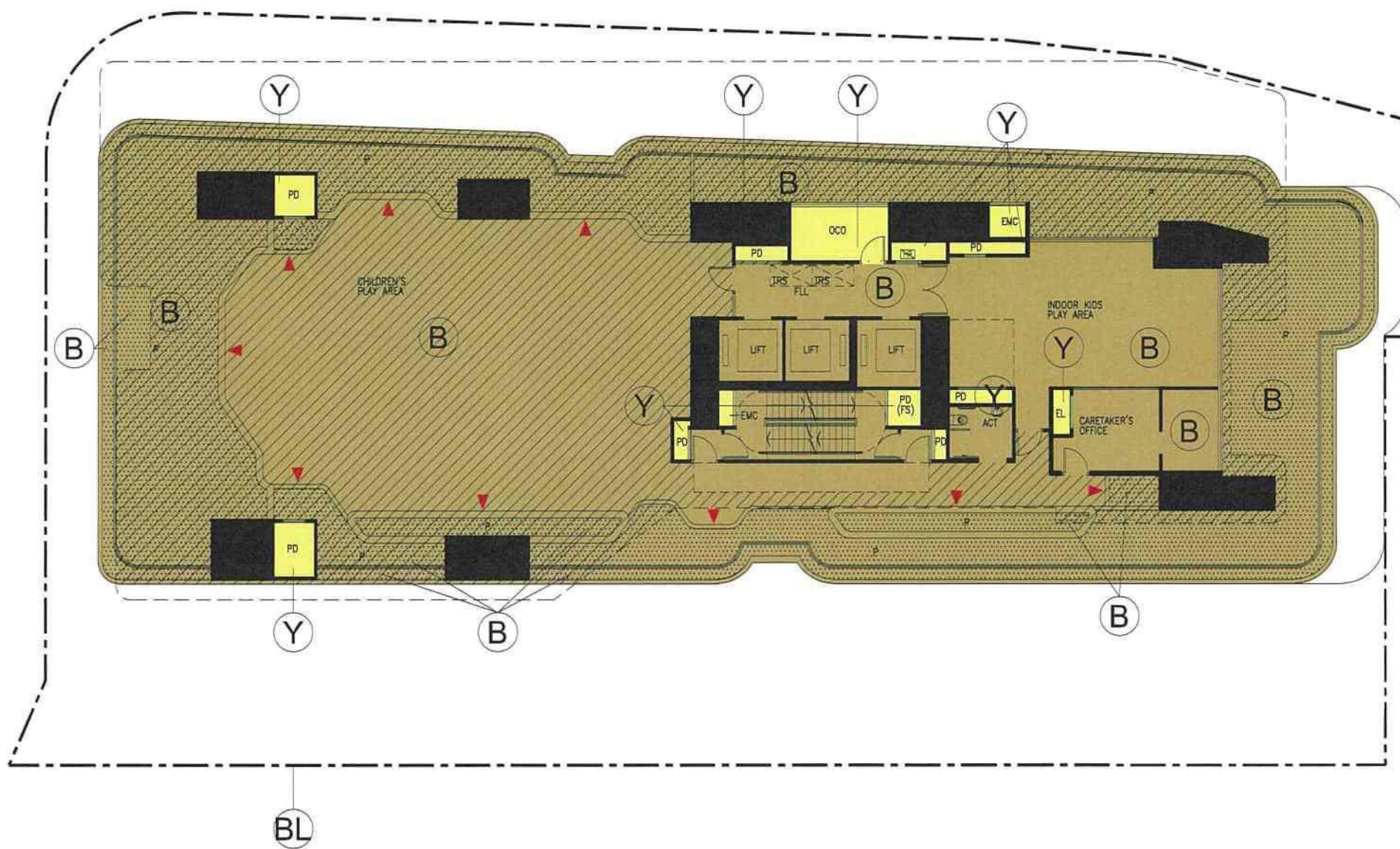
2/F PLAN



URA DEVELOPMENT PROJECT KC-008(A) AT THE REMAINING PORTION OF KOWLOON INLAND LOT NO.11278		DATE : 13.06.2023
PLAN NO. DMC-005 1:200 @ A3	DMC PLAN FOR IDENTIFICATION PURPOSE ONLY	I HEREBY CERTIFY THE ACCURACY OF THIS PLAN CHAN WAN MING Authorized Person (Architect)

LEGEND :

-  BROWN - RESIDENTIAL COMMON AREAS AND FACILITIES
-  BROWN HATCHED BLACK - RESIDENTIAL COMMON AREAS AND FACILITIES (COVERED LANDSCAPED AREA)
-  BROWN STIPPLED BLACK - RESIDENTIAL COMMON AREAS AND FACILITIES (GREENERY AREAS 85.491s.m.)
-  BROWN HATCHED BLACK STIPPLED BLACK - RESIDENTIAL COMMON AREAS AND FACILITIES (GREENERY AREAS CUM COVERED LANDSCAPED AREA 65.842s.m.)
-  YELLOW - DEVELOPMENT COMMON AREAS AND FACILITIES
-  BOUNDARY LINE
-  COMMON ACCESS TO THE GREENERY AREAS



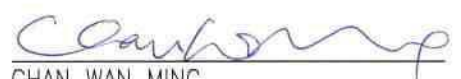
ABBREVIATION

ACT	ACCESSIBLE UNISEX TOILET
EL	ELECTRICAL
EMC	ELECTRIC METER CABINET
FLL	FIREMAN'S LIFT LOBBY
FS	FIRE SERVICES
HR	HOSE REEL
OCO	OWNERS' COMMITTEE OFFICE
P	PLANTER
PD	PIPE DUCT
TRS	TEMPORARY REFUGE SPACE

3/F PLAN



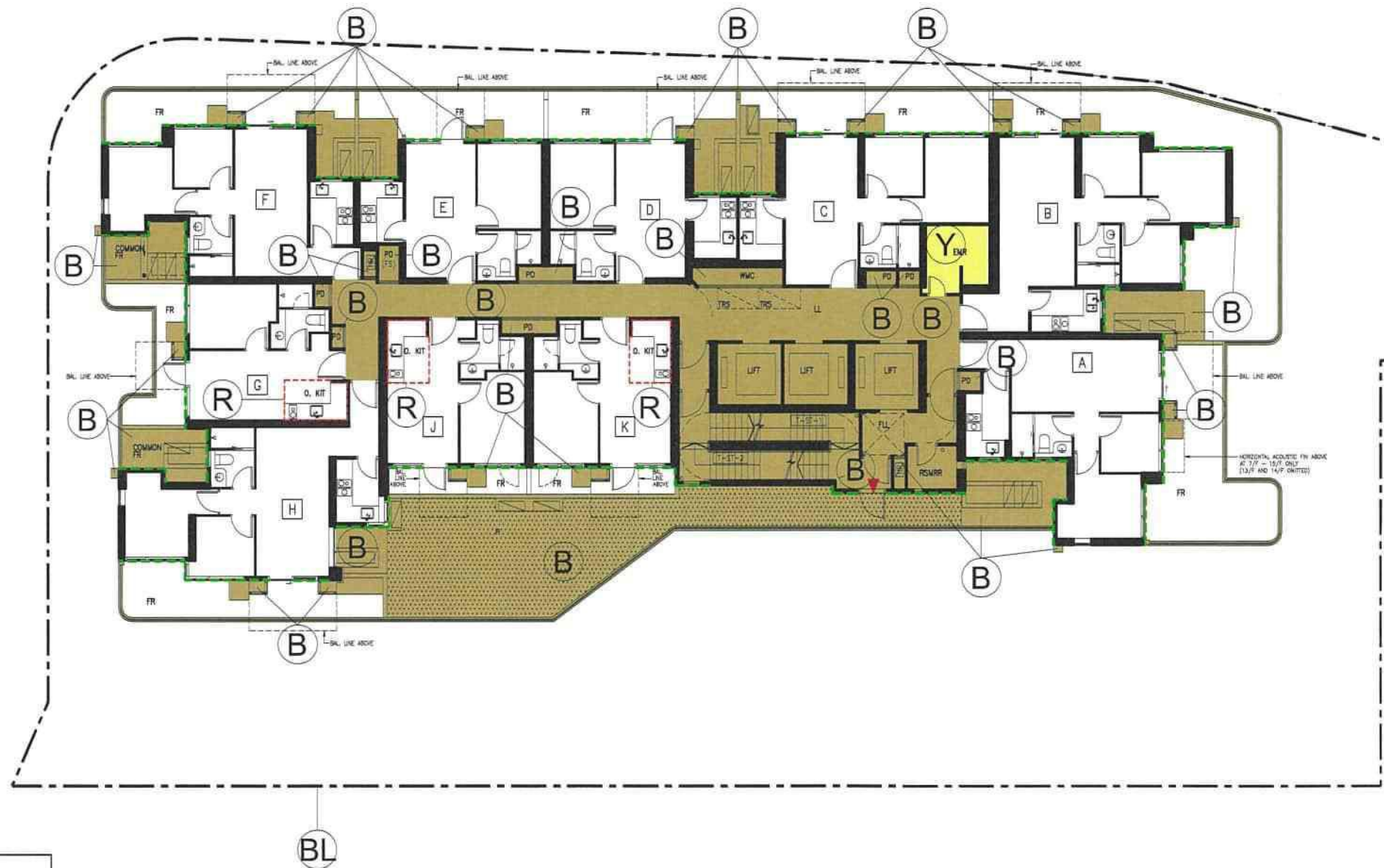
DATE : 13.06.2023

URA DEVELOPMENT PROJECT KC-008(A) AT THE REMAINING PORTION OF KOWLOON INLAND LOT NO.11278		I HEREBY CERTIFY THE ACCURACY OF THIS PLAN  CHAN WAN MING Authorized Person (Architect)
PLAN NO. DMC-006 1:200 @ A3	DMC PLAN FOR IDENTIFICATION PURPOSE ONLY	



LEGEND :

- B BROWN - RESIDENTIAL COMMON AREAS AND FACILITIES
- BROWN STIPPLED BLACK - RESIDENTIAL COMMON AREAS AND FACILITIES (GREENERY AREAS 46.461s.m.)
- YELLOW - DEVELOPMENT COMMON AREAS AND FACILITIES
- BL BOUNDARY LINE
- ▲ COMMON ACCESS TO THE GREENERY AREAS
- NON-STRUCTURAL PREFABRICATED EXTERNAL WALL
- R OPEN KITCHEN
- R (Symbol for room identification)



ABBREVIATION

BAL	BALCONY
EMR	ELECTRIC METER ROOM
FLL	FIREMAN'S LIFT LOBBY
FR	FLAT ROOF
FS	FIRE SERVICES
HR	HOSE REEL
LL	LIFT LOBBY
O. KIT	OPEN KITCHEN
P	PLANTER
PD	PIPE DUCT
RSMRR	REFUSE STORAGE AND MATERIAL RECOVERY ROOM
TRS	TEMPORARY REFUGE SPACE
WMC	WATER METER CABINET

5/F PLAN
(4/F OMITTED)



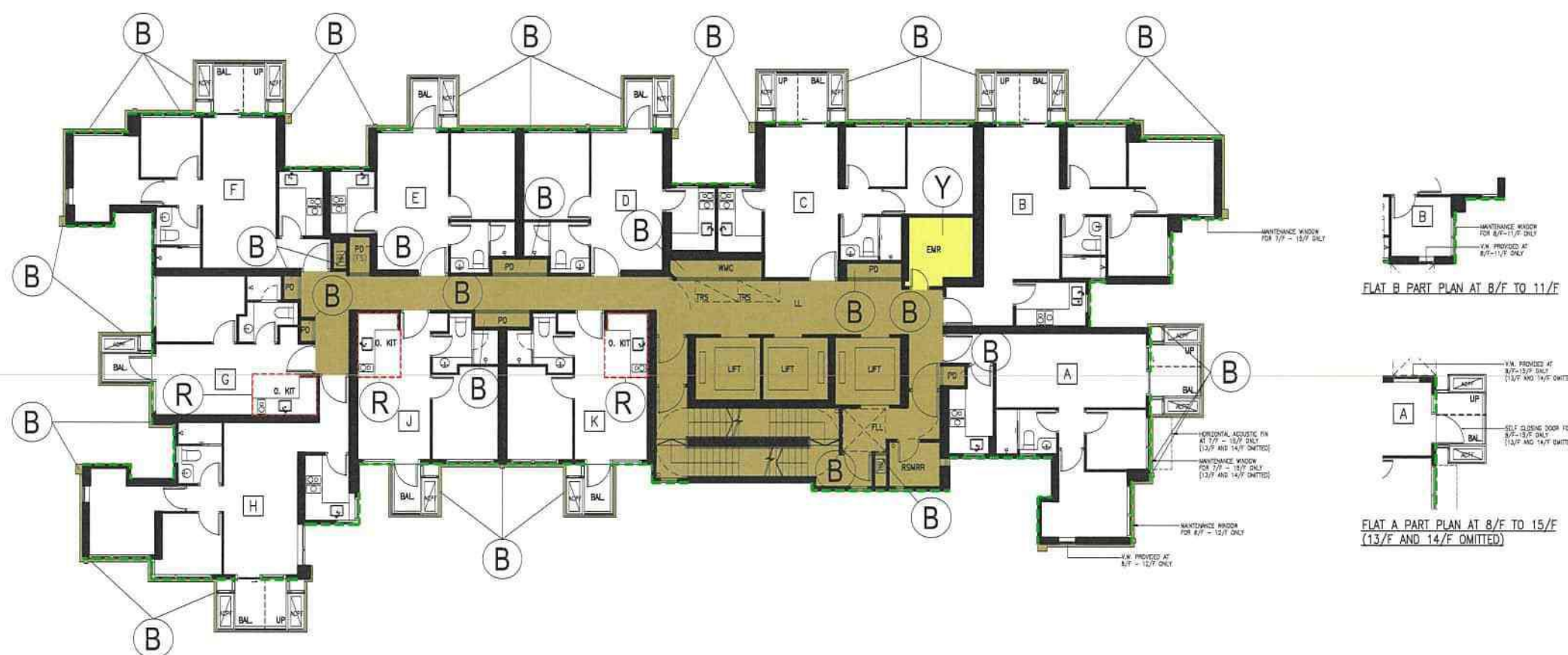
DATE : 08.08.2023

URA DEVELOPMENT PROJECT KC-008(A) AT THE REMAINING PORTION OF KOWLOON INLAND LOT NO.11278		I HEREBY CERTIFY THE ACCURACY OF THIS PLAN CHAN WAN MING Authorized Person (Architect)
PLAN NO. DMC-007 1:200 @ A3	DMC PLAN FOR IDENTIFICATION PURPOSE ONLY	



LEGEND :

- B BROWN - RESIDENTIAL COMMON AREAS AND FACILITIES
- Y YELLOW - DEVELOPMENT COMMON AREAS AND FACILITIES
- NON-STRUCTURAL PREFABRICATED EXTERNAL WALL
- OPEN KITCHEN
- R



ABBREVIATION

ACPF	AIR CONDITIONER PLATFORM
BAL.	BALCONY
EMR	ELECTRIC METER ROOM
FLL	FIREMAN'S LIFT LOBBY
FS	FIRE SERVICES
HR	HOSE REEL
LL	LIFT LOBBY
O. KIT	OPEN KITCHEN
PD	PIPE DUCT
RSMRR	REFUSE STORAGE AND MATERIAL RECOVERY ROOM
TRS	TEMPORARY REFUGE SPACE
UP	UTILITY PLATFORM
V.W.	VENTILATION WINDOW
WMC	WATER METER CABINET

6/F TO 29/F PLAN
(13/F, 14/F AND 24/F OMITTED)



DATE : 08.08.2023

URA DEVELOPMENT PROJECT KC-008(A) AT THE REMAINING PORTION OF KOWLOON INLAND LOT NO.11278		I HEREBY CERTIFY THE ACCURACY OF THIS PLAN <i>Chan Wan Ming</i> CHAN WAN MING Authorized Person (Architect)
PLAN NO. DMC-008 1:200 @ A3	DMC PLAN FOR IDENTIFICATION PURPOSE ONLY	



LEGEND :

- B BROWN - RESIDENTIAL COMMON AREAS AND FACILITIES
- B BROWN STIPPLED BLACK - RESIDENTIAL COMMON AREAS AND FACILITIES (GREENERY AREAS 38.694s.m.)
- Y YELLOW - DEVELOPMENT COMMON AREAS AND FACILITIES
- ▲ COMMON ACCESS TO THE GREENERY AREA
- NON-STRUCTURAL PREFABRICATED EXTERNAL WALL
- R OPEN KITCHEN
- R (R)




ABBREVIATION

ACPF	AIR CONDITIONER PLATFORM
BAL	BALCONY
EMR	ELECTRIC METER ROOM
FLL	FIREMAN'S LIFT LOBBY
FS	FIRE SERVICES
HR	HOSE REEL
LL	LIFT LOBBY
O. KIT	OPEN KITCHEN
PD	PIPE DUCT
RSMRR	REFUSE STORAGE AND MATERIAL RECOVERY ROOM
TRS	TEMPORARY REFUGE SPACE
UP	UTILITY PLATFORM
WMC	WATER METER CABINET

30/F PLAN



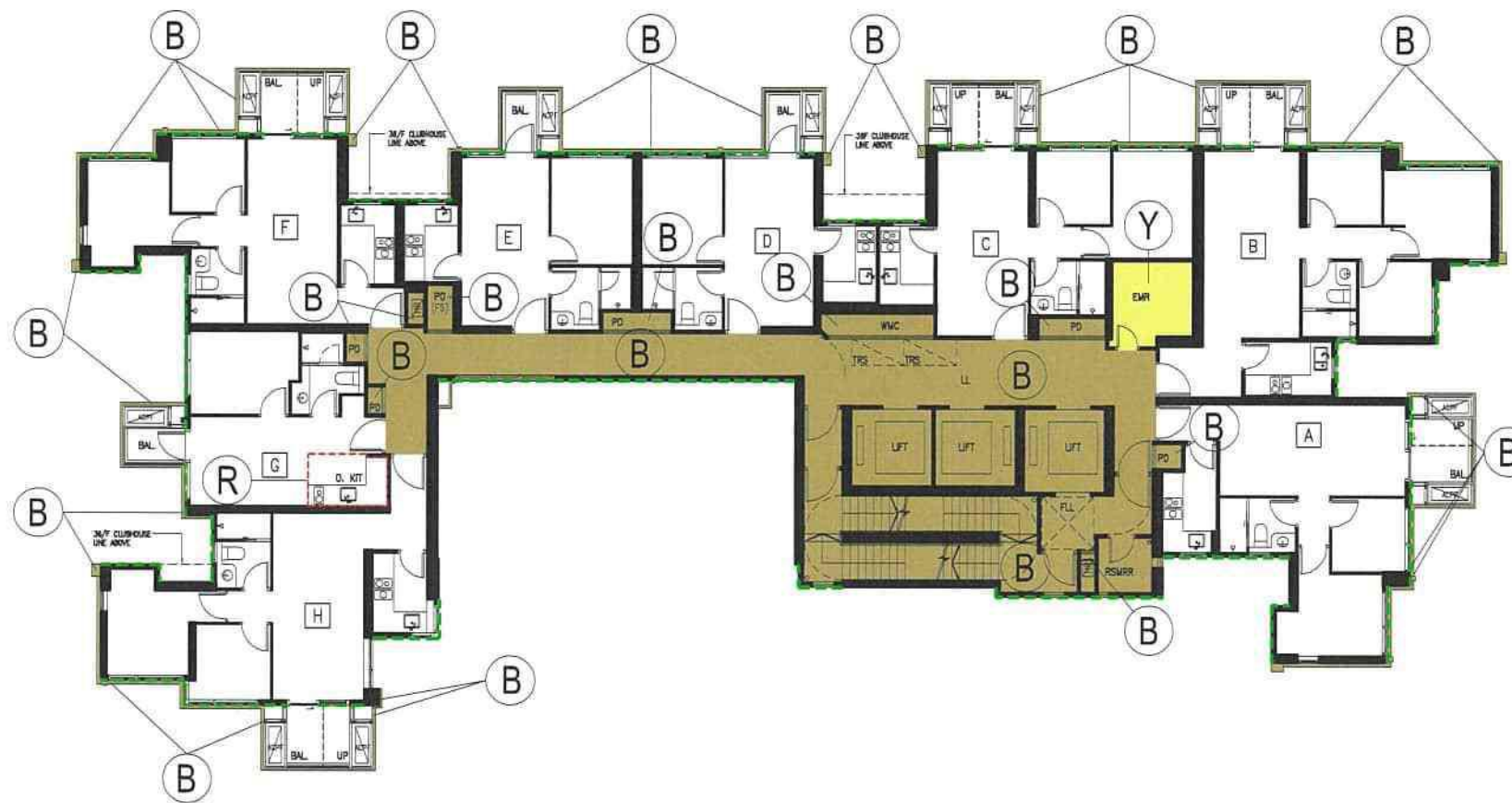
DATE : 08.08.2023

URA DEVELOPMENT PROJECT KC-008(A) AT THE REMAINING PORTION OF KOWLOON INLAND LOT NO.11278		I HEREBY CERTIFY THE ACCURACY OF THIS PLAN
PLAN NO. DMC-009 1:200 • A3	DMC PLAN FOR IDENTIFICATION PURPOSE ONLY	 CHAN WAN MING Authorized Person (Architect)



LEGEND :

- B BROWN - RESIDENTIAL COMMON AREAS AND FACILITIES
- Y YELLOW - DEVELOPMENT COMMON AREAS AND FACILITIES
- NON-STRUCTURAL PREFABRICATED EXTERNAL WALL
- OPEN KITCHEN
- R




ABBREVIATION

ACPF	AIR CONDITIONER PLATFORM
BAL.	BALCONY
EMR	ELECTRIC METER ROOM
FLL	FIREMAN'S LIFT LOBBY
FS	FIRE SERVICES
HR	HOSE REEL
LL	LIFT LOBBY
O. KIT	OPEN KITCHEN
PD	PIPE DUCT
RSMRR	REFUSE STORAGE AND MATERIAL RECOVERY ROOM
TRS	TEMPORARY REFUGE SPACE
UP	UTILITY PLATFORM
WMC	WATER METER CABINET

31/F TO 35/F PLAN
(34/F OMITTED)



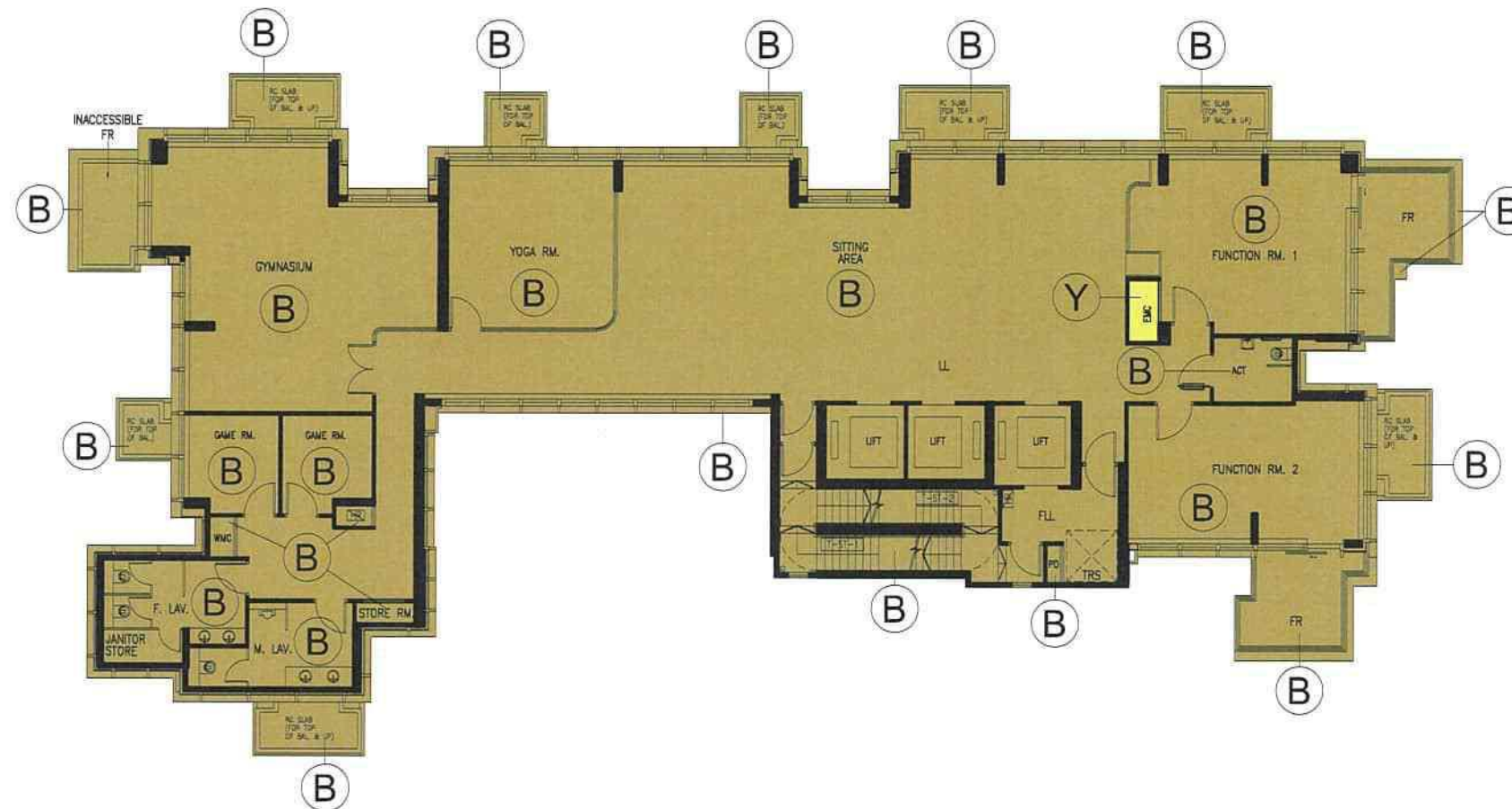
DATE : 08.08.2023

URA DEVELOPMENT PROJECT KC-008(A) AT THE REMAINING PORTION OF KOWLOON INLAND LOT NO.11278		I HEREBY CERTIFY THE ACCURACY OF THIS PLAN
PLAN NO. DMC-010 1:200 @ A3	DMC PLAN FOR IDENTIFICATION PURPOSE ONLY	 CHAN WAN MING Authorized Person (Architect)



LEGEND :

- B BROWN - RESIDENTIAL COMMON AREAS AND FACILITIES
- Y YELLOW - DEVELOPMENT COMMON AREAS AND FACILITIES




ABBREVIATION

ACT	ACCESSIBLE UNISEX TOILET
BAL.	BALCONY
EMC	ELECTRIC METER CABINET
F.	FEMALE
FLL	FIREMAN'S LIFT LOBBY
FR	FLAT ROOF
HR	HOSE REEL
LAV.	LAVATORY
LL	LIFT LOBBY
M.	MALE
PD	PIPE DUCT
RC	REINFORCED CONCRETE
RM.	ROOM
TRS	TEMPORARY REFUGE SPACE
UP	UTILITY PLATFORM
WMC	WATER METER CABINET

36/F PLAN



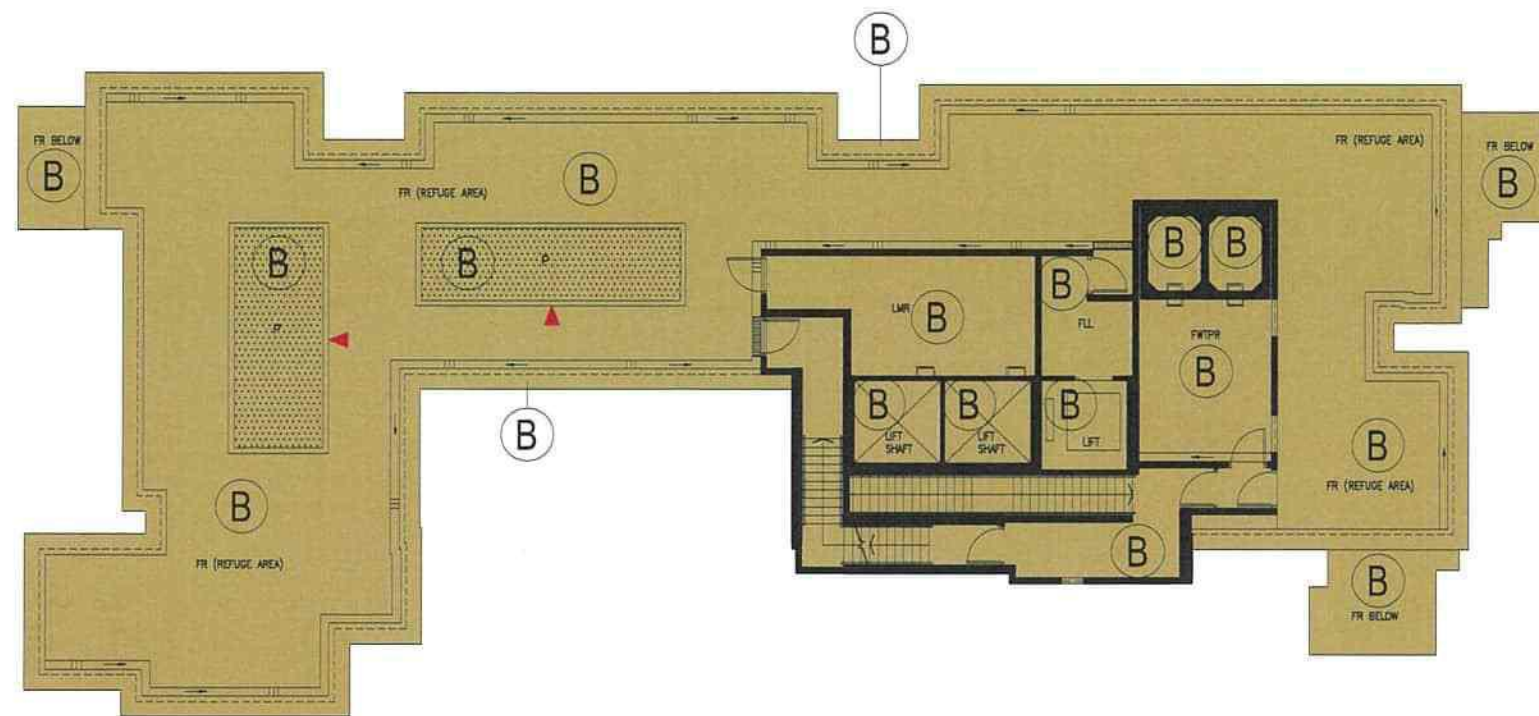
DATE : 13.06.2023

URA DEVELOPMENT PROJECT KC-008(A) AT THE REMAINING PORTION OF KOWLOON INLAND LOT NO.11278		I HEREBY CERTIFY THE ACCURACY OF THIS PLAN  CHAN WAN MING Authorized Person (Architect)
PLAN NO. DMC-011 1:200 @ A3	DMC PLAN FOR IDENTIFICATION PURPOSE ONLY	



LEGEND :

- B BROWN – RESIDENTIAL COMMON AREAS AND FACILITIES
- S BROWN STIPPLED BLACK – RESIDENTIAL COMMON AREAS AND FACILITIES (GREENERY AREAS 26.645s.m.)
- ▲ COMMON ACCESS TO THE GREENERY AREAS



ROOF PLAN



ABBREVIATION

FLL	FIREMAN'S LIFT LOBBY
FR	FLAT ROOF
FWTPR	FLUSHING WATER TANK AND PUMP ROOM
LMR	LIFT MACHINE ROOM
P	PLANTER

DATE : 13.06.2023

URA DEVELOPMENT PROJECT KC-008(A) AT THE REMAINING PORTION OF KOWLOON INLAND LOT NO.11278

I HEREBY CERTIFY THE ACCURACY OF THIS PLAN

PLAN NO. DMC-012
1:200 @ A3

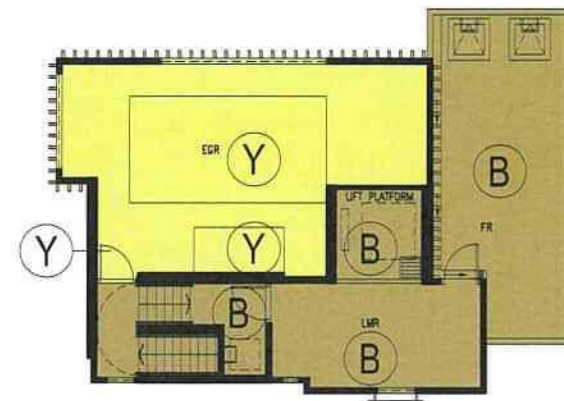
DMC PLAN
FOR IDENTIFICATION PURPOSE ONLY


CHAN WAN MING
Authorized Person (Architect)

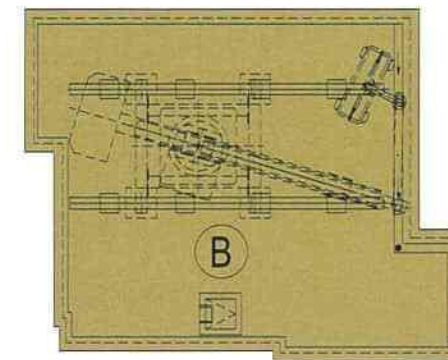


LEGEND :

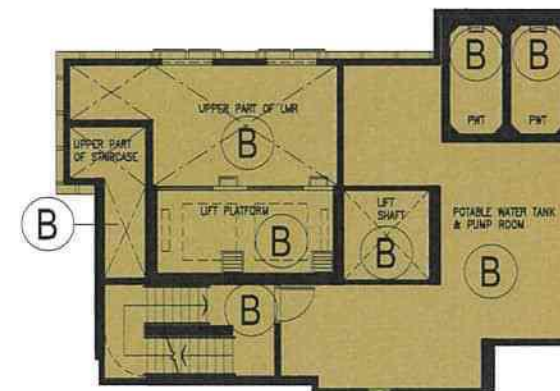
- B BROWN - RESIDENTIAL COMMON AREAS AND FACILITIES
- Y YELLOW - DEVELOPMENT COMMON AREAS AND FACILITIES



UPPER ROOF 2 PLAN



TOP ROOF PLAN



UPPER ROOF 1 PLAN



ABBREVIATION

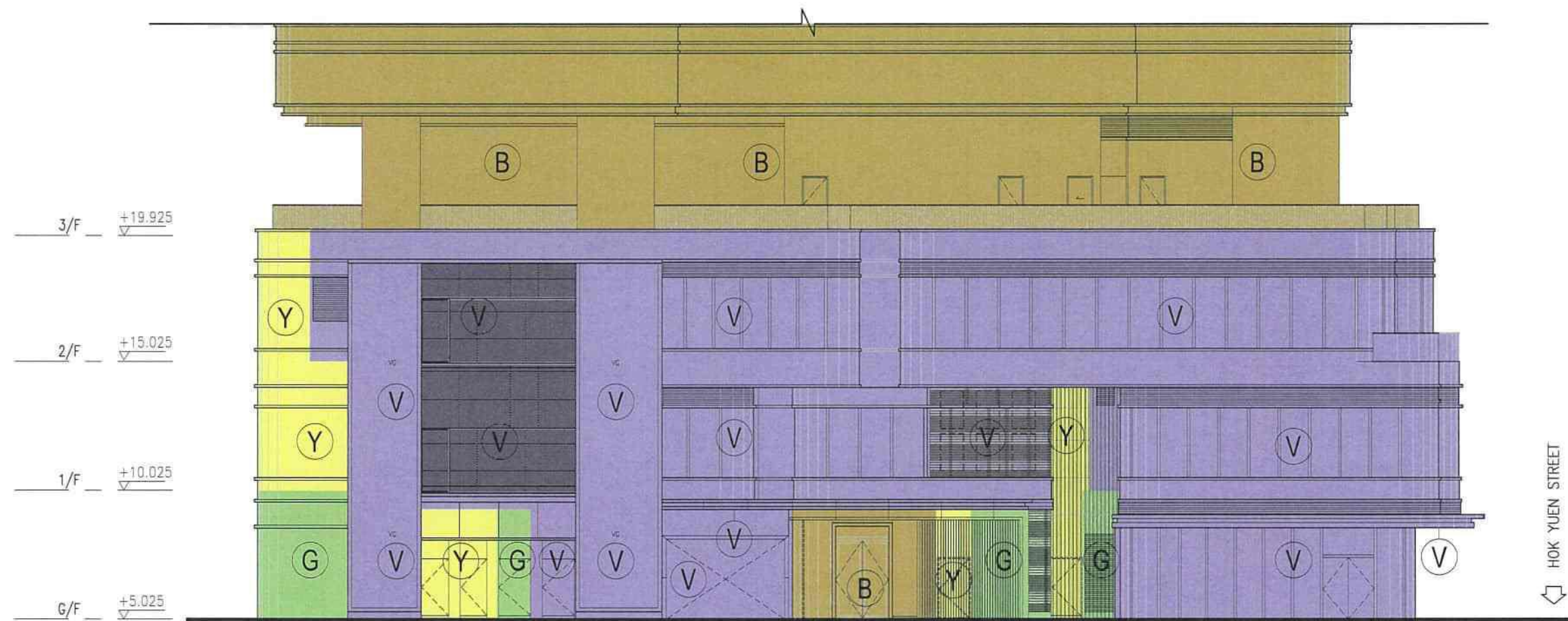
EGR	EMERGENCY GENERATOR ROOM
FR	FLAT ROOF
LMR	LIFT MACHINE ROOM
PWT	POTABLE WATER TANK

DATE : 13.06.2023

URA DEVELOPMENT PROJECT KC-008(A) AT THE REMAINING PORTION OF KOWLOON INLAND LOT NO.11278		I HEREBY CERTIFY THE ACCURACY OF THIS PLAN <i>Chan Wan Ming</i> CHAN WAN MING Authorized Person (Architect)
PLAN NO. DMC-013 1:200 A3	DMC PLAN FOR IDENTIFICATION PURPOSE ONLY	

LEGEND :

- G GREEN - CARPARK COMMON AREAS AND FACILITIES
- B BROWN - RESIDENTIAL COMMON AREAS AND FACILITIES
- Y YELLOW - DEVELOPMENT COMMON AREAS AND FACILITIES
- V VIOLET - COMMERCIAL ACCOMMODATION



ELEVATION 1



ABBREVIATION

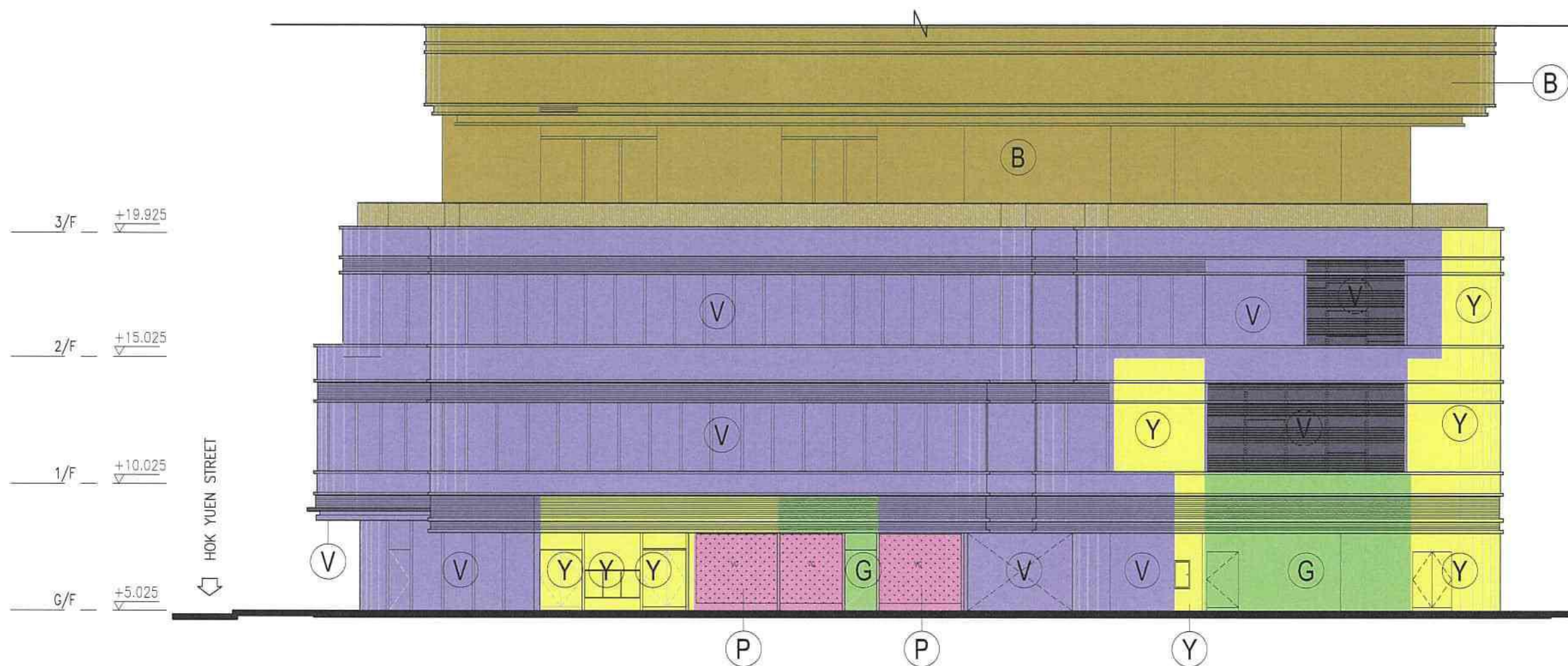
VG	VERTICAL GREENING
----	-------------------

DATE : 13.06.2023

URA DEVELOPMENT PROJECT KC-008(A) AT THE REMAINING PORTION OF KOWLOON INLAND LOT NO.11278	I HEREBY CERTIFY THE ACCURACY OF THIS PLAN CHAN WAN MING Authorized Person (Architect)
PLAN NO. DMC-014 <small>1:200 @ A3</small>	DMC PLAN <small>FOR IDENTIFICATION PURPOSE ONLY</small>

LEGEND :

- G GREEN - CARPARK COMMON AREAS AND FACILITIES
- B BROWN - RESIDENTIAL COMMON AREAS AND FACILITIES
- Y YELLOW - DEVELOPMENT COMMON AREAS AND FACILITIES
- V VIOLET - COMMERCIAL ACCOMMODATION
- P PINK - COMMERCIAL COMMON AREAS AND FACILITIES
- P PINK STIPPLED BLACK - COMMERCIAL COMMON AREAS AND FACILITIES (GREENERY AREAS 26.490s.m.)



ELEVATION 2



ABBREVIATION

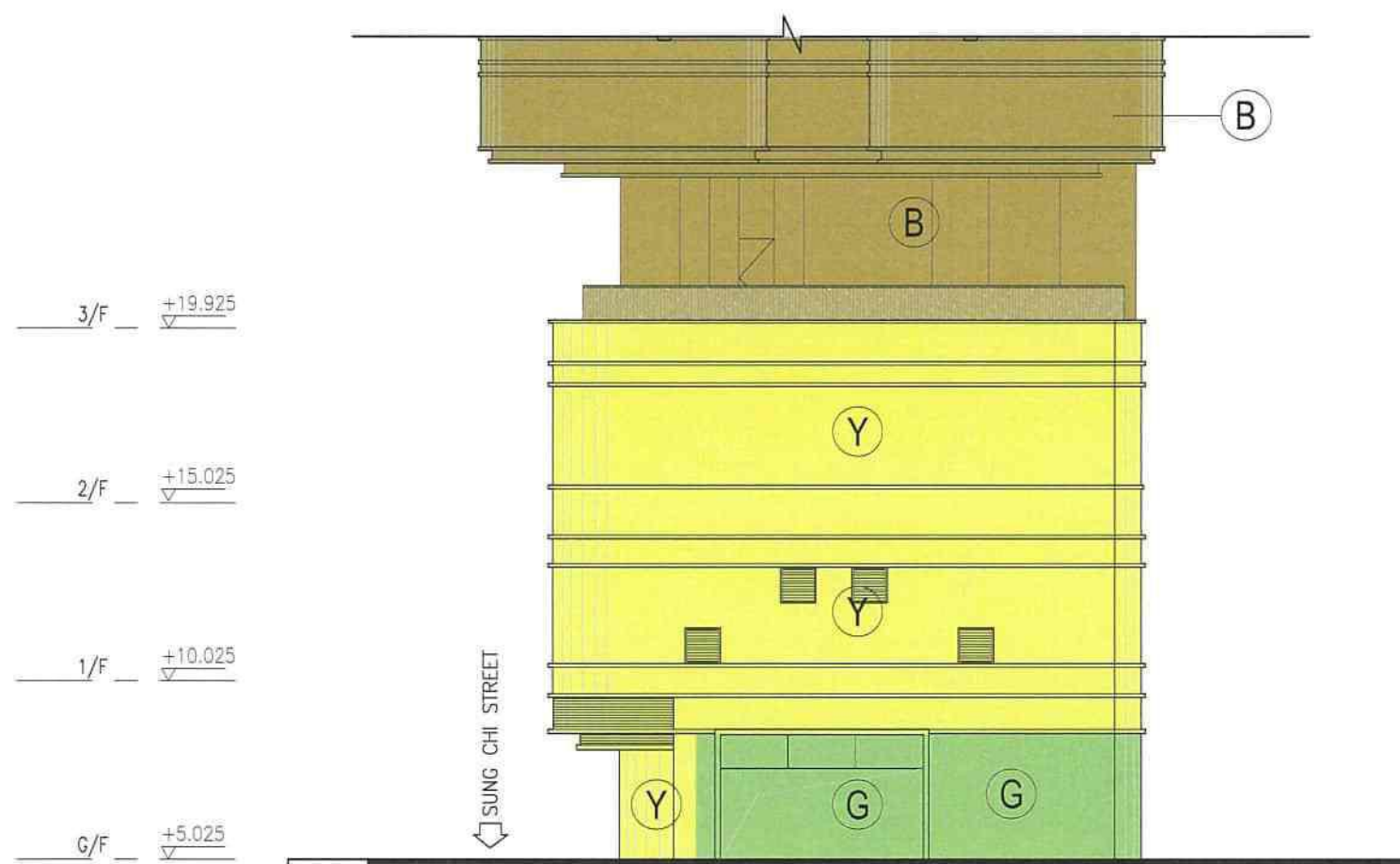
VG	VERTICAL GREENING
----	-------------------

DATE : 08.08.2023

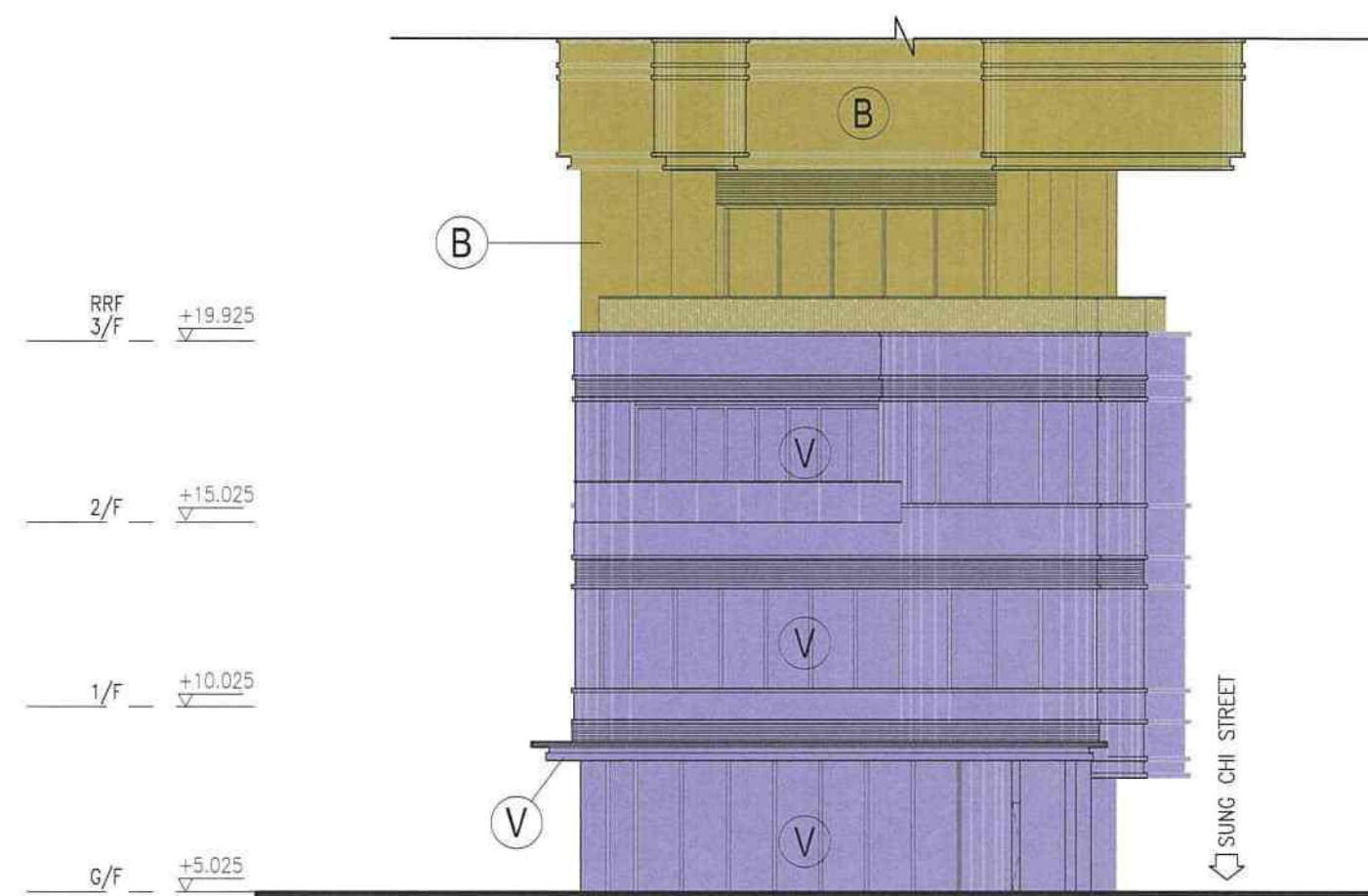
URA DEVELOPMENT PROJECT KC-008(A) AT THE REMAINING PORTION OF KOWLOON INLAND LOT NO.11278		I HEREBY CERTIFY THE ACCURACY OF THIS PLAN CHAN WAN MING Authorized Person (Architect)
PLAN NO. DMC-015 1:200 @ A3	DMC PLAN FOR IDENTIFICATION PURPOSE ONLY	

LEGEND :

- G GREEN - CARPARK COMMON AREAS AND FACILITIES
- B BROWN - RESIDENTIAL COMMON AREAS AND FACILITIES
- Y YELLOW - DEVELOPMENT COMMON AREAS AND FACILITIES
- V VIOLET - COMMERCIAL ACCOMMODATION




ELEVATION 3



ELEVATION 4



DATE : 08.08.2023

URA DEVELOPMENT PROJECT KC-008(A) AT THE REMAINING PORTION OF KOWLOON INLAND LOT NO.11278		I HEREBY CERTIFY THE ACCURACY OF THIS PLAN  CHAN WAN MING Authorized Person (Architect)
PLAN NO. DMC-016 1:200 @ A3	DMC PLAN FOR IDENTIFICATION PURPOSE ONLY	